

Hormone Disruptors and Women's Health

Reasons for Concern

A woman's body changes throughout her lifetime. Each stage of life, from fetal development to post-menopause, involves a direct relationship between her hormones and how her body develops and functions. When this relationship is in balance, it helps create the conditions for good health. When this relationship is out of balance, it can lead to a range of health problems that can be painful and devastating.

Increasingly, the scientific evidence shows that some industrial chemicals, known as hormone disruptors, can throw off this balance. As a result, women can be at greater risk for experiencing health problems such as infertility and breast cancer.

The Problem

Over the last 70 years, more than 80,000 chemicals have been released into the environment through human activity. Because of inadequate health and safety laws, more than 85% of these chemicals have never been assessed for possible effects on human health. Although many of them may not cause harm, a significant number of those that have been tested are now believed to increase our risk for serious health problems.

Hormone disruptors are one category of these chemicals that scientists are concerned about. Although many different chemicals can increase a woman's risk for health problems, hormone disruptors are of particular concern because they can alter the critical hormonal balances required for proper health and development at all stages of a woman's life.

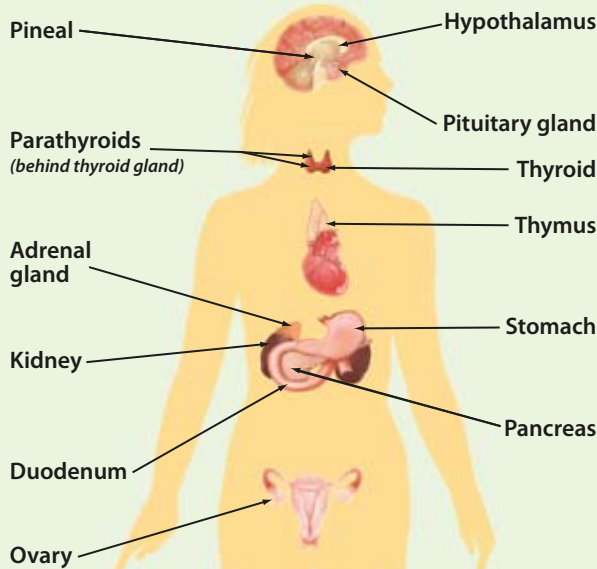
This brochure summarizes some of the latest peer-reviewed science about the risks hormone disruptors pose to women and their reproductive health.



Hormones and Hormone Disruptors

Hormones regulate a wide range of functions in our bodies. Hormone disruptors* can interfere with these functions.

Hormones *Clear Messages*



Hormone Disruptors *Mixed Messages*



WHAT
THEY ARE

Hormones are produced by the endocrine system, which includes the ovaries (women), testes (men), pituitary, thyroid, pancreas and other parts of the body. They are then secreted into the blood as chemical messengers. Examples of hormones include adrenaline, estrogen, insulin, thyroid hormones and testosterone.

Hormone disruptors are substances not naturally found in the body that interfere with the production, release, transport, metabolism, binding, action or elimination of the body's natural hormones. Phthalates, Bisphenol A (BPA) and DDT are some of the more commonly known hormone disruptors.

WHAT
THEY DO

Hormones direct communication and coordination among tissues throughout the body. For example, hormones work with the nervous system, reproductive system, kidneys, gut, liver and fat to help maintain and control body energy levels, reproduction, growth and development, internal balance of body systems (called homeostasis) and responses to surroundings, stress and injury (1).

Hormone disruptors can scramble messages that natural hormones transfer between cells. Usually hormones bind to hormone receptors like a lock and key. When the key fits, it unlocks the process of sending messages to regulate functions in the body. Hormone disruptors can interfere with this process. For example, some can mimic natural hormones and bind to the receptors, unlocking the process but sending the wrong message.

* Hormone disruptors are also referred to as endocrine disruptors.

The Complexity of Health

No formula currently exists that can determine the exact effects hormone disruptors will have on a woman's health. Research indicates that the effects depend on the potency and dose of the chemical, the timing of the exposure and the individual's overall health, which can be shaped by her genetic makeup, diet, exercise habits, racial and economic disparities, sexually transmitted diseases, access to health care and many other factors.

How We Are Exposed

People can be exposed to hormone disruptors indoors and outdoors, at home and in the workplace. Hormone disruptors get into our bodies when we breathe, eat, drink and have skin contact with them. They can be found in household products such as cosmetics and plastic containers. They can come from industrial pollution and cigarette smoke. Some pesticides are hormone disruptors and can end up on our food and in our waterways. Below are a few examples of hormone disruptors. More research is needed to identify all hormone disruptors and their potential health impacts.

Examples of Hormone Disruptors

Atrazine	Atrazine is one of the most heavily used herbicides in the U.S. and is widely applied to corn and soy crops. It is banned in the European Union due to concerns of ground water contamination (2).
BPA	Bisphenol A (BPA) is commonly used in some plastic products such as sports bottles and baby bottles, in addition to the linings of canned food and infant formula.
Cigarette Smoke <i>First and Secondhand</i>	Cigarette smoke contains hundreds of chemicals, including some hormone disruptors. More research is needed to fully understand how cigarette smoke affects hormone function. This research is especially important because cigarette smoke is very common and because so many health problems are associated with it.
DDT	The pesticide dichloro diphenyl trichloroethane (DDT) was widely used in the U.S. until it was banned in 1972 due to toxicity (3). DDE, a byproduct from the breakdown of DDT is also harmful. DDT is still used in some other countries, often to eliminate mosquitoes associated with malaria risk.
DES	Diethylstilbestrol (DES) is an estrogenic compound that was first manufactured in 1938 and was prescribed to prevent miscarriages. It is no longer used for this purpose because of the associated health risks.
Dioxins	Dioxins are the byproducts of some manufacturing and incineration processes. The uncontrolled burning of residential waste is thought to be among the largest sources of dioxins in the United States (4).
PBBs	Polybrominated biphenyls (PBBs) were used as a flame retardant in electrical appliances, textiles, plastic foams and other products (5). In 1976 the manufacturing of PBBs ended in the U.S. after they contaminated milk supplies (6,7).
PCBs	Polychlorinated biphenyls (PCBs) are a class of compounds that were used as coolants and insulation in electrical equipment (8), in coating of electrical wiring and for many other purposes. They were banned in the 1970s due to their toxicity.
Phthalates	Phthalates are a family of compounds used as a plasticizer in PVC (vinyl), cosmetics, fragrance and medical devices. Some phthalates were banned from children's products in 2008 (9).

Some hormone disruptors such as DDT (10) and PCBs (11) were banned more than 30 years ago but persist in the environment, animals and our bodies.





Women's Reproductive Health Concerns

Animal studies designed to predict human harm, as well as a limited number of human studies, have helped researchers understand some of the ways hormone disruptors can increase risk for various health problems. More research is needed, but below are descriptions of some of these health problems and examples of associated hormone disruptors (in italics).

Early puberty is a growing concern. In the U.S. girls get their first periods a few months earlier than they did 40 years ago, and they develop breasts one to two years earlier (12). Early puberty has been associated with polycystic ovarian syndrome, obesity, breast cancer, depression and a number of social challenges such as experimentation with sex, alcohol or drugs at a younger age (13). *Phthalates (14-16), BPA (17), some pesticides such as DDT (18-21), PCBs (22), PBBs (23), cigarette smoke (24) and DES (25).*

Impaired fertility or infertility includes difficulty or the inability to get pregnant and/or carry a pregnancy to term. It is difficult to say for certain how many people experience impaired fertility, but the best estimate is 12% of the reproductive age population in the U.S. This number seems to have increased over the last two decades, most sharply in women under the age of 25 (26,27). Menstrual irregularities and male infertility contribute to this problem, as well as other specific health concerns, which are listed below. *DDT (28-30), cigarette smoke (31,32), phthalates (33) and PCBs (34-36).*

Polycystic ovarian syndrome (PCOS) symptoms include irregular periods, pelvic pain and ovarian cysts (37). Women with PCOS have a higher risk of developing insulin resistance, diabetes, endometrial cancer, infertility, miscarriage and hypertension (38,39). *BPA (40,41).*

Uterine fibroids occur in 25% to 50% of all women, though some estimates are much higher (42). Fibroids are the number one cause of hysterectomy in reproductive age women (43) and can cause pelvic pain, abnormally heavy periods, abnormal uterine bleeding, infertility and complications in pregnancy (44-49). *DES (50-55) and BPA (56).*

Endometriosis occurs when the tissue that lines the inside of the uterus (called the endometrium) grows outside the uterus on other parts of the body, for example the ovaries, abdomen and pelvis. Estimates vary, but most studies find between 10% and 15% of reproductive-age women have endometriosis (57,58). About 30% to 40% of women with endometriosis are infertile, making it one of the leading contributors to female infertility (59). *DES (60), dioxins (61-64), phthalates (65,66) and PCBs (34,62,67-71).*

Miscarriage affects up to 21% of known pregnancies (72-74) and can be caused by a variety of factors, especially abnormal chromosomes (known as aneuploidy) (75). *BPA (76), cigarette smoke (32) and pesticides such as DDT (29).*

Shortened lactation, or reducing how long a woman can breastfeed her baby, can have long-term impacts on the child, including increased risk for infection, chronic disease, compromised immunity and obesity. Breastfeeding helps build a child's immune system and later intelligence and is important

to the bonding and nurturing process (77,78). *PCBs (79-81) and pesticides such as Atrazine (82) or DDT/DDE (79-81,83).*

Breast cancer incidence rates in the United States increased by more than 40% between 1973 and 1998. In 2008, a woman's lifetime risk of breast cancer is one in eight (84). More than 200 chemicals, including numerous hormone disruptors, have been associated with increased incidence of breast tumors (85). *DES (86-89), BPA (90-96), first- or second-hand smoke (97-103) and some pesticides, especially early life exposure to DDT (104,105).*

Hormone Disruptors and Men's Health. This report focuses on the risks of hormone disruptors and women's health, but these chemicals also pose risks to males, especially from exposures in the womb. Some of these risks include hypospadias (a birth defect of the penis), cryptorchidism (undescended testicles), impaired fertility from reduced sperm count and semen quality, and some cancers, including testicular and prostate cancer.

Hormone disruptors are not the only type of chemicals that can harm women's health. Solvents, air pollution, heavy metals such as lead and mercury and many other contaminants can harm people's health. To learn about other environmental contaminants, see the references at the end of this brochure.



What We Are Learning

Research into hormone disruptors is changing our understanding of health risks. Traditional schools of thought are evolving to reflect the complexity of how chemicals impact our health. Some trends in the research findings include:



Timing of Exposure

Throughout a woman's lifetime, reproductive organs develop and change. Stages of rapid development can be especially vulnerable to the effects of hormone disruptors, and exposure at these times can increase risk for health problems later in life. For example, exposure to some hormone disruptors before birth can increase the chance for early puberty, infertility and breast cancer.



Generational Effects

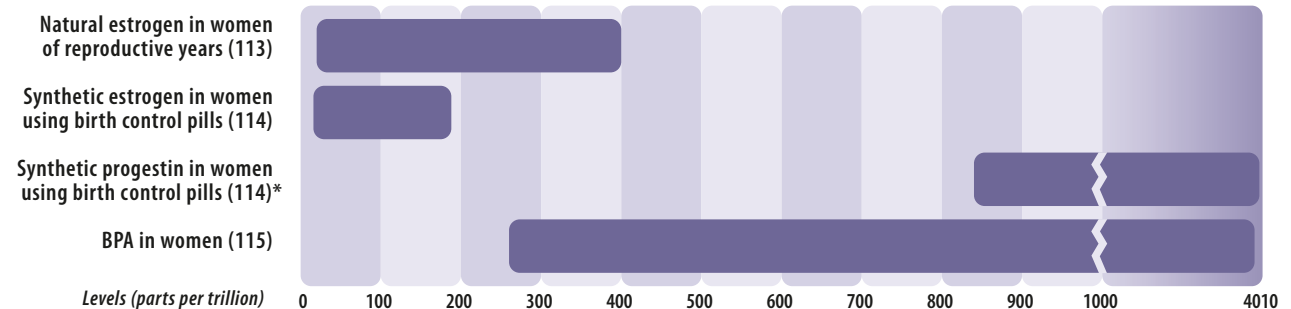
Hormone disruptors can cause multi-generational harm. The clearest example of this is DES, a drug given to pregnant women for many years to prevent miscarriage (though it was ineffective). Many DES daughters experience infertility and cancer in their reproductive organs (106,107) and breasts (108). Animal studies show that the granddaughters of women who took DES are also at risk for ovarian and uterine cancers (109).



Level of Exposure

For years it was assumed that everyday levels of chemical exposure would not harm our health, but emerging research calls this into question. For example, some studies have found that low levels of BPA can harm reproductive health in female mice (110) and their offspring (111). More research is needed to fully understand how BPA impacts humans, but the Centers for Disease Control detected BPA in nearly 93% of the people they tested (112), raising new questions about its widespread use.

Hormone Activation Levels. Natural or synthetic hormones can activate changes at very low levels. This graph shows normal levels of natural estrogen (estradiol) in women and levels of synthetic estrogen (ethinyl estradiol) and progestin (desogestrel) in women taking birth control. These levels are adequate to activate significant functions, such as regulating menstrual cycles and preventing pregnancy. BPA, which can mimic natural estrogen, can be found in the body under normal conditions at the same or higher levels than these natural or synthetic hormones.



* Levels of 3-keto-desogestrel, the metabolite of desogestrel.

What We Can Do

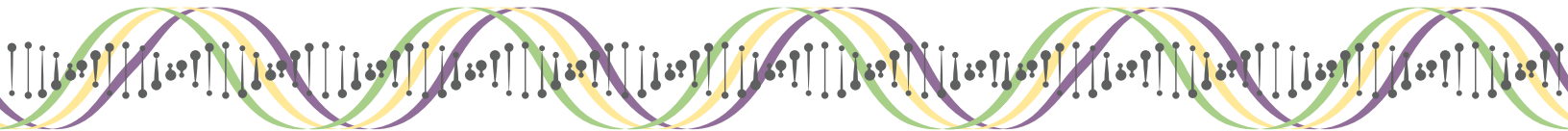
We know enough about hormone disruptors to know we have a problem. A coordinated effort between researchers, elected officials, advocates, medical professionals, business leaders and the general public is needed to ensure that we are not putting our families and future generations at undue risk. Some of the things we can do are:

Support better research on hormone disruptors, including:

- *Prioritize research funding to study the effects of hormone disruptors on women's health.* Most of the research to date has been focused on hormone disruptors and men, leaving more gaps in the research on women's health.
- *Improve health tracking systems.* Currently the systems that track rates of various health problems are inadequate. In order to understand the full impact of hormone disruptors on human health, collecting this information is critical.
- *Support long-term studies.* Because hormone disruptors can have life-long impacts, it is especially important to initiate studies tracking women's health over large spans of their lives. This will help us understand long-term and multi-generational effects.

Support policies to prevent exposure to hormone disruptors and other chemicals that have not been proven safe. Current standards for chemical use do not adequately protect us. New national policies are needed to identify and phase out harmful chemicals and to require that safer substitutes be used.

Use healthier products when possible. There are many easy, affordable and simple changes anyone can make at home to reduce their exposure to environmental contaminants. For ideas on how to make these changes, please see www.womenshealthandenvironment.org.



References

References for this report were taken from peer-reviewed sources that summarize the links between hormone disruptors and women's health. The primary source was:

Crain, AD, Janssen, S. et al. Female reproductive disorders: The roles of endocrine disrupting compounds and developmental timing. *Fertility and Sterility*; expected publication Fall 2008.

Other references used to support the development of this report include:

Proceedings from the Summit on Environmental Challenges to Reproductive Health and Fertility. Hosted by the University of California, San Francisco and the Collaborative on Health and the Environment. *Fertility and Sterility* 2008;89:e1-e20. www.prhe.ucsf.edu/prhe/events/ucsfche_fs.html.

Shaping Our Legacy: Reproductive Health and the Environment. A report on the Summit on Environmental Challenges to Reproductive Health and Fertility, January 28–30, 2007. www.prhe.ucsf.edu/prhe/pubs/shapingour-legacy.pdf.

These and many other resources document how hormone disruptors and a wide range of other contaminants can harm people's health. For full documentation of this brochure, see www.healthandenvironment.org/reprohealthworkshop.

This report summarizes the key outcomes of the Women's Reproductive Health and the Environment Workshop held at Commonwealth in Bolinas, CA, January 6–9, 2008. Results are published in "Female reproductive disorders: The roles of endocrine disrupting compounds and developmental timing." (See References for full citation).

The workshop was co-sponsored by the Collaborative on Health and the Environment (CHE), the University of Florida (UF) and the University of California, San Francisco's Program on Reproductive Health and the Environment (PRHE). This event was co-chaired by Dr. Louis Guillette at UF (www.zoology.ufl.edu/ljg) and Dr. Linda Giudice at PRHE (www.prhe.ucsf.edu). Please contact these individuals for further information about this research. Thanks to Sarah Janssen of Natural Resources Defense Council for contributing to this brochure. Written by Heather Sarantis.

Funding for this project was provided by John Burbank and Alison Carlson, the Barbara Smith Fund, the Johnson Family Foundation, The New York Community Trust and Turner Foundation, Inc.

For copies of this brochure or for more information please contact CHE (www.healthandenvironment.org).



Notes

- 1 National Institute of Environmental Health Science Endocrine Disruptor factsheet. www.niehs.nih.gov/health/topics/agents/endocrine/docs/endocrine.pdf. Viewed August 12, 2008.
- 2 Atrazine US website. www.thecre.com/atrazine/intactions.htm. Viewed August 25, 2008.
- 3 Environmental Protection Agency Press Release. www.epa.gov/history/topics/ddt/01.htm. Viewed August 25, 2008.
- 4 Food and Drug Administration website. www.cfsan.fda.gov/~lrd/dioxinqa.html#g1. Viewed August 25, 2008.
- 5 Department of Health and Human Services Agency for Toxic Substances & Disease Registry, PBB factsheet. www.atsdr.cdc.gov/tfacts68.html. Viewed August 25, 2008.
- 6 Fries GF, Marrow GS, and Cook RM. Distribution and kinetics of PBB residues in cattle. *Environ Health Perspect*. 1978 April;23:43–50.
- 7 Department of Health and Human Services Agency for Toxic Substances & Disease Registry, PBB factsheet. www.atsdr.cdc.gov/tfacts68.html#bookmark02. Viewed August 25, 2008.
- 8 Department of Health and Human Services Agency for Toxic Substances & Disease Registry, PCB factsheet. www.atsdr.cdc.gov/tfacts17.html. Viewed August 25, 2008.
- 9 Breast Cancer Fund website. www.breastcancerfund.org/site/pp.asp?c=kwKXLdPaE&b=4132341. Viewed August 25, 2008.
- 10 Centers for Disease Control and Prevention National Environmental Public Health Tracking Program webpage. www.cdc.gov/nceh/tracking/biomontrack.htm#exposures. Viewed August 12, 2008.
- 11 Centers for Disease Control and Prevention Third National Report on Human Exposure to Environmental Chemicals. 2005. www.cdc.gov/exposurereport/report.htm. Viewed August 25, 2008.
- 12 Euling SY, Herman Giddens ME, Lee PA, Selevan SG, Juul A, Sorensen TI et al. Examination of US puberty-timing data from 1940 to 1994 for secular trends: panel findings. *Pediatrics* 2008;121 Suppl 3:S17291.
- 13 Sandra Steingraber. The Falling Age of Puberty in U.S. Girls: What We Know, What We Need to Know. Breast Cancer Fund. 2007. www.breastcancerfund.org/puberty.
- 14 Colon I, Caro D, Bourdony CJ, Rosario O. Identification of phthalate esters in the serum of young Puerto Rican girls with premature breast development. *Environ Health Perspect* 2000;108:895–900.
- 15 McKee RH. Phthalate exposure and early thelarche. *Environ Health Perspect* 2004;112:A5413.
- 16 Qiao L, Zheng L, Cai D. Study on the dinbutyl phthalate and dizethylhexyl phthalate level of girl serum related with precocious puberty in Shanghai. *Wei Sheng Yan Jiu* 2007;36:935.
- 17 Howdeshell KL, Hotchkiss AK, Thayer KA, Vandenberg JG, vom Saal FS. Exposure to Bisphenol A advances puberty. *Nature* 1999;401:763–4.
- 18 Ouyang F, Perry MJ, Venners SA, Chen C, Wang B, Yang F et al. Serum DDT, age at menarche, and abnormal menstrual cycle length. *Occup Environ Med* 2005;62:87884.
- 19 Guillette EA, Conard C, Lares F, Aguilar MG, McLachlan J, Guillette LJ, Jr. Altered breast development in young girls from an agricultural environment. *Environ Health Perspect* 2006;114:4715.
- 20 Krstevska-Konstantinova M, Charlier C, Craen M, Du Caju M, Heinrichs C, de Beaufort C et al. Sexual precocity after immigration from developing countries to Belgium: evidence of previous exposure to organochlorine pesticides. *Hum Reprod* 2001;16:10206.
- 21 Vasiliu O, Muttineni J, Karmaus W. In utero exposure to organochlorines and age at menarche. *Hum Reprod* 2004;19:150612.
- 22 Denham M, Schell LM, Deane G, Gallo MV, Ravenscroft J, DeCaprio AP. Relationship of lead, mercury, mirex, dichlorodiphenyldichloroethylene, hexachlorobenzene, and polychlorinated biphenyls to timing of menarche among Akwesasne Mohawk girls. *Pediatrics* 2005;115:e12734.
- 23 Blanck HM, Marcus M, Tolbert PE, Rubin C, Henderson AK, Hertzberg VS et al. Age at menarche and tanner stage in girls exposed in utero and postnatally to polybrominated biphenyl. *Epidemiology* 2000;11:6417.
- 24 Windam GC et al, Age at menarche in relation to maternal use of tobacco, alcohol, coffee and tea during pregnancy. *American Journal of Epidemiology*;2004;159:862–71.

- 25 Brown NM, Lamartiniere CA. Xenoestrogens alter mammary gland differentiation and cell proliferation in the rat. *Environ Health Perspect* 1995;103:70813.
- 26 Chandra A, Martinez GM, Mosher WD, Abma JC, Jones J. Fertility, family planning, and reproductive health of U.S. women: data from the 2002 National Survey of Family Growth. *Vital Health Stat* 2005;Series 23 #25:1–160.
- 27 Brett K. Fecundity in 2002 NSFG women 15–24 years of age. Hyattsville, MD: National Center for Health Statistics. Personal communication, April 22, 2008.
- 28 Cohn BA, Cirillo PM, Wolff MS, Schwingl PJ, Cohen RD, Sholtz RI, et al. DDT and DDE exposure in mothers and time to pregnancy in daughters. *Lancet* 2003;361:2205–6.
- 29 Venners SA, Korrick S, Xu X, Chen C, Guang W, Huang A, et al. Pre-conception serum DDT and pregnancy loss: a prospective study using a biomarker of pregnancy. *Am J Epidemiol* 2005;162:709–16.
- 30 Longnecker MP, Klebanoff MA, Dunson DB, Guo X, Chen Z, Zhou H, et al. Maternal serum level of the DDT metabolite DDE in relation to fetal loss in previous pregnancies. *Environ Res* 2005;97:127–33.
- 31 Hruska KS, Furth PA, Seifer DB, Sharara FI, Flaws JA. Environmental factors in infertility. *Clin Obstet Gynecol* 2000;43:821–9.
- 32 Younglai EV, Holloway AC, Foster WG. Environmental and occupational factors affecting fertility and IVF success. *Hum Reprod Update* 2005;11:43–57.
- 33 Lovekamp-Swan T, Davis BJ. Mechanisms of phthalate ester toxicity in the female reproductive system. *Environ Health Perspect* 2003;111:139–45.
- 34 Sharara FI, Seifer DB, Flaws JA. Environmental toxicants and female reproduction. *Fertil Steril* 1998;70:613–22.
- 35 Miller KP, Borgeest C, Greenfeld C, Tomic D, Flaws JA. In utero effects of chemicals on reproductive tissues in females. *Toxicol Appl Pharmacol* 2004;198:111–31.
- 36 Toft G, Hagmar L, Giwercman A, Bonde JP. Epidemiological evidence on reproductive effects of persistent organochlorines in humans. *Reprod Toxicol* 2004;19:5–26.
- 37 U.S. Department of Health and Human Services, Office on Women's Health. Polycystic Ovarian Syndrome Frequently Asked Questions. www.4woman.gov/FAQ/pcos.htm#a. Viewed August 12, 2008.
- 38 Azziz R, Woods KS, Reyna R, Key TJ, Knochenhauer ES, Yildiz BO. The prevalence and features of the polycystic ovary syndrome in an unselected population. *J Clin Endocrinol Metab* 2004;89:27459.
- 39 Yildiz BO, Knochenhauer ES, Azziz R. Impact of obesity on the risk for polycystic ovary syndrome. *J Clin Endocrinol Metab* 2008;93:1628.
- 40 Takeuchi T, Tsutsumi O, Ikezuki Y, Takai Y, Taketani Y. Positive relationship between androgen and the endocrine disruptor, Bisphenol A, in normal women and women with ovarian dysfunction. *Endocr J* 2004;51:1659.
- 41 Takeuchi T, Tsutsumi O, Ikezuki Y, Kamei Y, Osuga Y, Fujiwara T et al. Elevated serum Bisphenol A levels under hyperandrogenic conditions may be caused by decreased UDP glucuronosyltransferase activity. *Endocr J* 2006;53:48591.
- 42 Cramer SF, Patel A. The frequency of uterine leiomyomas. *Am J Clin Pathol* 1990;94:4358.
- 43 Buttram VC, Jr., Reiter RC. Uterine leiomyomata: etiology, symptomatology, and management. *Fertil Steril* 1981;36:43345.
- 44 Carlson KJ, Miller BA, Fowler FJ, Jr. The Maine Women's Health Study: I. Outcomes of hysterectomy. *Obstet Gynecol* 1994;83:55665.
- 45 Carlson KJ, Miller BA, Fowler FJ, Jr. The Maine Women's Health Study: II. Outcomes of nonsurgical management of leiomyomas, abnormal bleeding, and chronic pelvic pain. *Obstet Gynecol* 1994;83:56672.
- 46 Coronado GD, Marshall LM, Schwartz SM. Complications in pregnancy, labor, and delivery with uterine leiomyomas: a population-based study. *Obstet Gynecol* 2000;95:7649.
- 47 Kjerulff KH, Langenberg P, Seidman JD, Stolley PD, Guzinski GM. Uterine leiomyomas. Racial differences in severity, symptoms and age at diagnosis. *J Reprod Med* 1996;41:48390.
- 48 Rice JP, Kay HH, Mahony BS. The clinical significance of uterine leiomyomas in pregnancy. *Am J Obstet Gynecol* 1989;160:12126.
- 49 Rowe MK, Kanouse DE, Mittman BS, Bernstein SJ. Quality of life among women undergoing hysterectomies. *Obstet Gynecol* 1999;93:91521.

- 50 Hodges LC, Hunter DS, Bergerson JS, FuchsYoung R, Walker CL. An in vivo/in vitro model to assess endocrine disrupting activity of xenoestrogens in uterine leiomyoma. *Ann NY Acad Sci* 2001;948:10011.
- 51 Newbold RR, Moore AB, Dixon D. Characterization of uterine leiomyomas in CD1 mice following developmental exposure to diethylstilbestrol (DES). *Toxicol Pathol.* 2002;30:611 6.
- 52 Cook JD, Davis BJ, Cai SL, Barrett JC, Conti CJ, Walker CL. Interaction between genetic susceptibility and early-life environmental exposure determines tumorsuppressorgene penetrance. *Proc Natl Acad Sci U S A* 2005;102:86449.
- 53 Cook JD, Davis BJ, Goewey JA, Berry TD, Walker CL. Identification of a sensitive period for developmental programming that increases risk for uterine leiomyoma in Eker rats. *Reprod Sci* 2007;14:12136.
- 54 Wise LA, Palmer JR, Rowlings K, Kaufman RH, Herbst AL, Noller KL et al. Risk of benign gynecologic tumors in relation to prenatal diethylstilbestrol exposure. *Obstet Gynecol* 2005;105:16773.
- 55 Baird DD, Newbold R. Prenatal diethylstilbestrol (DES) exposure is associated with uterine leiomyoma development. *Reprod Toxicol* 2005;20:814.
- 56 Newbold RR, Jefferson WN, Padilla-Banks E. Long-term adverse effects of neonatal exposure to Bisphenol A on the murine female reproductive tract. *Reprod Toxicol* 2007;24(2):253–8.
- 57 Leibson CL, Good AE, Hass SL, Ransom J, Yawn BP, O'Fallon WM et al. Incidence and characterization of diagnosed endometriosis in a geographically defined population. *Fertil Steril* 2004;82:31421.
- 58 Vigano P, Parazzini F, Somigliana E, Vercellini P. Endometriosis: epidemiology and aetiological factors. *Best Pract Res Clin Obstet Gynaecol* 2004;18:177200.
- 59 National Institute of Child Health and Human Development Endometriosis factsheet. www.nichd.nih.gov/publications/pubs/endometriosis/. Viewed August 12, 2008.
- 60 Missmer SA, Hankinson SE, Spiegelman D, Barbieri RL, Michels KB, Hunter DJ. In utero exposures and the incidence of endometriosis. *Fertil Steril* 2004;82:15018.
- 61 Shi YL, Luo XZ, Zhu XY, Hua KQ, Zhu Y, Li DJ. Effects of combined 17beta-estradiol with TCDD on secretion of chemokine IL-8 and expression of its receptor CXCR1 in endometriotic focus-associated cells in co-culture. *Hum Reprod* 2006;21:870–9.
- 62 Rier SE. The potential role of exposure to environmental toxicants in the pathophysiology of endometriosis. *Ann NY Acad Sci* 2002;955:201–12;discussion 30–2, 396–406.
- 63 Cummings AM, Hedge JM, Birnbaum LS. Effect of prenatal exposure to TCDD on the promotion of endometriotic lesion growth by TCDD in adult female rats and mice. *Toxicol Sci* 1999;52:459.
- 64 Cummings AM, Metcalf JL, Birnbaum L. Promotion of endometriosis by 2,3,7,8tetrachlorodibenzopdioxin in rats and mice: time-dose dependence and species comparison. *Toxicol Appl Pharmacol* 1996;138:1319.
- 65 Cobellis L, Latini G, De Felice C, Razzi S, Paris I, Ruggieri F, et al. High plasma concentrations of di-(2-ethylhexyl)-phthalate in women with endometriosis. *Hum Reprod* 2003;18:1512–5.
- 66 Reddy BS, Rozati R, Reddy BV, Raman NV. Association of phthalate esters with endometriosis in Indian women. *BJOG* 2006;113:515–20.
- 67 Buck Louis GM, Weinter JM, Whitcomb BW, Sperrazza R, Schisterman EF, Lobdell DT, et al. Environmental polychlorinated biphenyl exposure and risk of endometriosis. *Obstet Gynecol Surv* 2005;60:243–4.
- 68 Eskenazi B, Mocarelli P, Warner M, Samuels S, Vercellini P, Olive D, et al. Serum dioxin concentrations and endometriosis: a cohort study in Seveso, Italy. *Environ Health Perspect* 2002;110:629–34.
- 69 Porpora MG, Ingelido AM, di Domenico A, Ferro A, Crobu M, Pallante D, et al. Increased levels of polychlorobiphenyls in Italian women with endometriosis. *Chemosphere* 2006;63:1361–7.
- 70 Reddy BS, Rozati R, Reddy S, Kodampur S, Reddy P, Reddy R. High plasma concentrations of polychlorinated biphenyls and phthalate esters in women with endometriosis: a prospective case control study. *Fertil Steril* 2006;85:775–9.
- 71 Quaranta MG, Porpora MG, Mattioli B, Giordani L, Libri I, Ingelido AM, et al. Impaired NK-cell-mediated cytotoxic activity and cytokine production in patients with endometriosis: a possible role for PCBs and DDE. *Life Sci* 2006;79:491–8.
- 72 Bricker L, Farquharson RG. Types of pregnancy loss in recurrent miscarriage: implications for research and clinical practice. *Human Reproduction* 2002;17:134550.

- 73 Buss L, Tolstrup J, Munk C, Bergholt T, Ottesen B, Gronbaek M et al. Spontaneous abortion: A prospective cohort study of younger women from the general population in Denmark. Validation, occurrence and risk determinants. *Acta Obstetrica Et Gynecologica Scandinavica* 2006;85:46775.
- 74 Chard T. Frequency of implantation and early-pregnancy loss In natural cycles. *Baillieres Clinical Obstetrics And Gynaecology* 1991;5:17989.
- 75 Regan L, Rai R. Epidemiology and the medical causes of miscarriage. *Best Practice & Research In Clinical Obstetrics & Gynaecology* 2000;14:83954.
- 76 Sugiura-Ogasawara M, Ozaki Y, Sonta S, Makino T, Suzumori K. Exposure to Bisphenol A is associated with recurrent miscarriage. *Hum Reprod* 2005;20:2325–9.
- 77 Schack-Nielsen L, and Michaelsen, K. Advances in our understanding of the biology of human milk and its effect on the offspring. *J Nutr* 137:503S–510S, 2007.
- 78 Koletzko B, Michaelsen K, Hernell O. Short and long term effects of breast feeding on child health. In: *Advances in Experimental Medicine and Biology*. Vol. 478: Academic Publishers, 2002.
- 79 Rogan WJ, Gladen BC, McKinney JD, Carreras N, Hardy P, Thullen J et al. Polychlorinated biphenyls (PCBs) and dichlorodiphenyl dichloroethene (DDE) in human milk: effects on growth, morbidity, and duration of lactation. *Am J Public Health* 1987;77:12947.
- 80 Gladen BC, Rogan WJ. DDE and shortened duration of lactation in a northern Mexican town. *Am J Public Health* 1995;85:5048.
- 81 Kornbrust D, Gillis B, Collins B, Goehl T, Gupta B, Schwetz B. Effects of 1,1-dichloro-2,2-bis[4-chlorophenyl]ethylene (DDE) on lactation in rats. *J Toxicol Environ Health* 1986;17:2336.
- 82 Rayner JL, Enoch RR, Fenton SE. Adverse effects of prenatal exposure to atrazine during a critical period of mammary gland growth. *Toxicol Sci* 2005;87:25566.
- 83 Karmaus W, Davis S, Fussman C, Brooks K. Maternal concentration of dichlorodiphenyl dichloroethylene (DDE) and initiation and duration of breast feeding. *Paediatr Perinat Epidemiol* 2005;19:38898.
- 84 Gray J. State of the Evidence 2008: The Connection Between Breast Cancer and the Environment. Breast Cancer Fund. 2008. www.breastcancerfund.org/site/pp.asp?c=kwKXLdPaE&b=206137.
- 85 Rudel RA, Attfield KR, Schifano JN, Brody JG. Chemicals causing mammary gland tumors in animals signal new directions for epidemiology, chemicals testing, and risk assessment for breast cancer prevention. *Cancer* 2007;109:263566.
- 86 Giusti RM, Iwamoto K, Hatch EE. Diethylstilbestrol revisited: a review of the long-term health effects. *Ann Intern Med* 1995;122:77888.
- 87 Palmer JR, Wise LA, Hatch EE, Troisi R, Titus-Ernstoff L, Strohsnitter W et al. Prenatal diethylstilbestrol exposure and risk of breast cancer. *Cancer Epidemiol Biomarkers Prev* 2006;15:150914.
- 88 Troisi R, Hatch EE, Titus-Ernstoff L, Hyer M, Palmer JR, Robboy SJ et al. Cancer risk in women prenatally exposed to diethylstilbestrol. *Int J Cancer* 2007;121:35660.
- 89 Boylan ES, Calhoun RE. Prenatal exposure to diethylstilbestrol: ovarian-independent growth of mammary tumors induced by 7,12-dimethylbenz[a]anthracene. *J Natl Cancer Inst* 1981;66:64952.
- 90 Vandenberg LN, Maffini MV, Wadia PR, Sonnenschein C, Rubin BS, Soto AM. Exposure to environmentally relevant doses of the xenoestrogen Bisphenol A alters development of the fetal mouse mammary gland. *Endocrinology* 2007;148:11627.
- 91 Murray TJ, Maffini MV, Ucci AA, Sonnenschein C, Soto AM. Induction of mammary gland ductal hyperplasias and carcinoma in situ following fetal Bisphenol A exposure. *Reprod Toxicol* 2007;23:38390.
- 92 Durando M, Kass L, Piva J, Sonnenschein C, Soto AM, Luque EH et al. Prenatal Bisphenol A exposure induces preneoplastic lesions in the mammary gland in Wistar rats. *Environ Health Perspect* 2007;115:806.
- 93 Markey CM, Luque EH, Munoz De Toro M, Sonnenschein C, Soto AM. In utero exposure to Bisphenol A alters the development and tissue organization of the mouse mammary gland. *Biol Reprod* 2001;65:121523.
- 94 Martin LJ, Boyd NF. Mammographic density. Potential mechanisms of breast cancer risk associated with mammographic density: hypotheses based on epidemiological evidence. *Breast Cancer Res* 2008;10:201.
- 95 MunozdeToro M, Markey CM, Wadia PR, Luque EH, Rubin BS, Sonnenschein C et al. Perinatal exposure to Bisphenol A alters peripubertal mammary gland development in mice. *Endocrinology* 2005;146:413847.

- 96 Wadia PR, Vandenberg LN, Schaeberle CM, Rubin BS, Sonnenschein C, Soto AM. Perinatal Bisphenol A exposure increases estrogen sensitivity of the mammary gland in diverse mouse strains. *Environ Health Perspect* 2007;115:5928.
- 97 Lee PN, Hamling J. Environmental tobacco smoke exposure and risk of breast cancer in nonsmoking women: A review with meta-analyses. *Inhalation Toxicology* 2006;18:1053–70.
- 98 Reynolds P, Hurley S, Goldberg DE, Anton-Culver H, Bernstein L, Deapen D, Horn-Ross PL, Peel D, Pinder R, Ross RK, West D, Wright WE, Ziogas A. Active smoking, household passive smoking, and breast cancer: Evidence from the California Teachers Study. *Journal of the National Cancer Institute* 2004;96:29–37.
- 99 Band PR, Le ND, Fang R, Deschamps M. Carcinogenic and endocrine disrupting effects of cigarette smoke and risk of breast cancer. *Lancet* 2002;360:1033–4.
- 100 Calle EE, Miracle-McMahill HL, Thun MJ, Heath CW Jr. Cigarette smoking and risk of fatal breast cancer. *American Journal of Epidemiology* 1994;139(10):1001–7.
- 101 Marcus PM, Newman B, Millikan RC, Moorman PG, Baird DD, Qaqish B. The associations of adolescent cigarette smoking, alcoholic beverage consumption, environmental tobacco smoke, and ionizing radiation with subsequent breast cancer risk (United States). *Cancer Causes and Control* 2000;11(3):271–278.
- 102 Johnson KC, Hu J, Mao Y. Passive and active smoking and breast cancer risk in Canada, 1994–1997, The Canadian Cancer Registries Epidemiology Research Group. *Cancer Causes and Control* 2000;11:211–221.
- 103 Gram IT, Braaten T, Terry PD, Sasco AJ, Adami HO, Lund EE, Weiderpass E. Breast cancer among women who started smoking as teenagers. *Cancer Epidemiology Biomarkers and Prevention* 2005;14:61–66.
- 104 Cohn BA, Wolff MS, Cirillo PM, Sholtz RI. DDT and Breast Cancer in Young Women: New Data on the Significance of Age at Exposure. *Environ Health Perspect* 2007;115:140614.
- 105 Safe S, Papineni S. The role of xenoestrogenic compounds in the development of breast cancer. *Trends Pharmacol Sci* 2006;27:44754.
- 106 Herbst AL, Ulfelder H, Poskanzer DC. Adenocarcinoma of the vagina. Association of maternal stilbestrol therapy with tumor appearance in young women. *N Engl J Med* 1971;284:87881.
- 107 Barclay DL. Congenital diethylstilbestrol-associated vaginal/cervical adenosis (DES babies). *J Ark Med Soc* 1979;75:4512.
- 108 Lagiou P. Intrauterine exposures, pregnancy estrogens and breast cancer risk: where do we currently stand? *Breast Cancer Res* 2006;8:112.
- 109 Shaping our Legacy: Reproductive Health and the Environment. University of California San Francisco and the Collaborative on Health and the Environment. 2008. p. 27.
- 110 Hunt PA, Koehler KE, Susiarjo M, Hodges CA, Ilagan A, Voigt RC et al. Bisphenol a exposure causes meiotic aneuploidy in the female mouse. *Curr Biol* 2003;13:54653.
- 111 Susiarjo M, Hassold TJ, Freeman E, Hunt PA. Bisphenol A exposure in utero disrupts early oogenesis in the mouse. *PLoS Genet* 2007;3:e5.
- 112 National Report on Human Exposure to Environmental Chemicals Spotlight on Bisphenol A. www.cdc.gov/exposurereport/pdf/factsheet_bisphenol.pdf.
- 113 Medline Plus Medical Encyclopedia: Estradiol. www.nlm.nih.gov/medlineplus/ency/article/003711.htm. Viewed August 12, 2008.
- 114 Drugs.com FDA Professional Drug Information for Ortho-Cept. www.drugs.com/pro/ortho-cept.html. Viewed August 12, 2008.
- 115 Welshons WV, Nagel SC, and vom Saal FS. Large effects from small exposures. III. Endocrine mechanisms mediating effects of Bisphenol A at levels of human exposure. *Endocrinology* 147(6) (Supplement):S56–S69.